

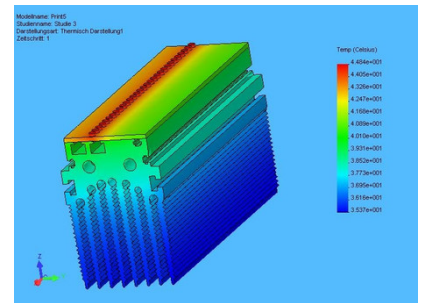
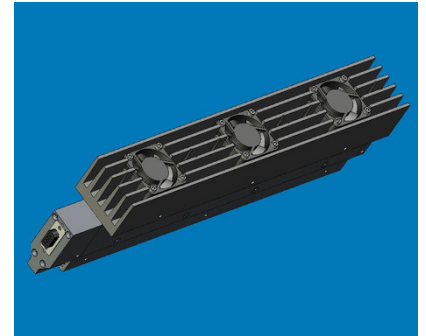


Light is vision.

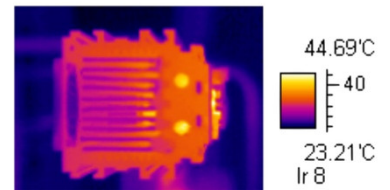
Thermal Management

When it comes to the development of products, systems and modules Volpi makes use of its comprehensive thermal management knowledge. This includes ideal isolation of sensitive parts from outer temperature influences as well as heat removal with passive and active cooling technologies.

- Insulation
- Convection
- Heat Pipe
- Fan Cooling
- Liquid Cooling (Closed Loop)



Thermal Rendering



Thermal-Camera Imaging